

featuring HAZELWOOD COLLECTION BY AGF STUDIO

X
X
X
X
X
X
X
X
X
X
X
X
X
X

Hidden Forest



FREE PATTERN

XXXXXXXXXXXXXXXXXXXXXXXXXXXXXXXXXXXX



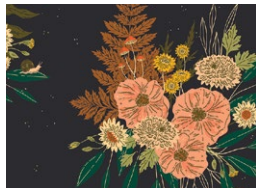
Hidden Forest

QUILT DESIGNED BY AGFstudio



Hazelwood

FABRICS DESIGNED BY AGF STUDIO



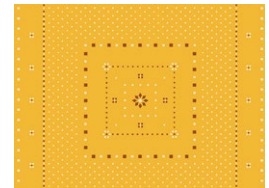
HZW62300
MOON FOREST



HZW62309
FLOWERED BOSK



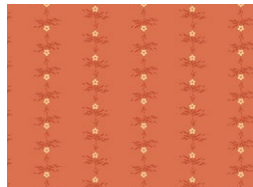
HZW62303
HIDDEN LAND MOSS



HZW62301
HANDKERCHIEF AMBER



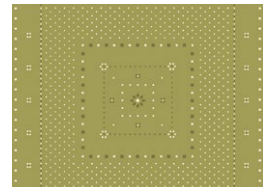
HZW62315
NESTING GARDEN



HZW62304
DAISY CHAINS



HZW62310
WILD FLORA SUNLIGHT



HZW62314
HANDKERCHIEF SAGE

ADDITIONAL BLENDERS FOR THIS PROJECT



PE426
APRICOT CREPE



PE509
GEORGIA PEACH



PE504
GOLDEN BRONZE



Hidden Forest

FINISHED SIZE | 72" x 72"

FABRIC REQUIREMENTS

| | | |
|-----------------|----------|---------|
| Fabric A | HZW62300 | 1 yd. |
| Fabric B | HZW62309 | 1 ½ yd. |
| Fabric C | HZW62303 | 1 yd. |
| Fabric D | PE426 | 1 ¼ yd. |
| Fabric E | HZW62301 | ¾ yd. |
| Fabric F | HZW62315 | 1 ¼ yd. |
| Fabric G | PE509 | ½ yd. |
| Fabric H | HZW62304 | ⅞ yd. |
| Fabric I | HZW62310 | ⅝ yd. |
| Fabric J | PE504 | ½ yd. |
| Fabric K | HZW62314 | ¼ yd. |

BACKING FABRIC

HZW62300 4½ yds (Suggested)

BINDING FABRIC

Fabric **F** HZW62315 (Included)

ADDITIONAL MATERIAL

Steam-a-seam double side fusible tape.

- Use the diagram below as your guide to cut your petal templates.

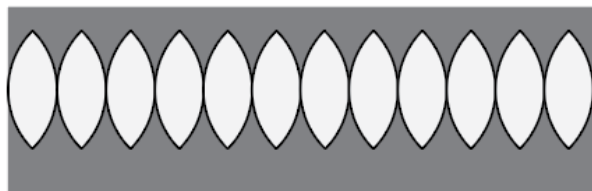


DIAGRAM 1

CUTTING DIRECTIONS

¼" seam allowances are included.
WOF means width of fabric.

- Forty four (44) petal templates from fabric **A**.
- Forty four (44) 6½" squares from fabric **B**.
- Forty (40) petal templates from fabric **C**.
- Thirty six (36) 6½" squares from fabric **D**.
- Twenty Eight (28) petal templates from fabric **E**.
- Twenty eight (28) 6½" squares from fabric **F**.
- Twenty (20) petal templates from fabric **G**.
- Twenty (20) 6½" squares from fabric **H**.
- Twelve (12) petal templates from fabric **I**.
- Twelve (12) 6½" squares from fabric **J**.
- Four (4) 6½" squares from fabric **K**.

CONSTRUCTION

Sew all rights sides together with ¼" seam allowance.

- Take forty four (44) 6½" squares from fabric **B** and forty four (44) Petal Templates from fabric **A**.
- Using a zig zag stitch or any preferred top stitch method, place one (1) petal on top of one (1) 6½" square from fabric **B**, wrong side facing down and right side of the square facing up.
- Make sure to center your piece, leaving a ¼" seam allowance on the corners of the square where the points of the petal template will be placed.
- Join forty four (44) **AB** units.

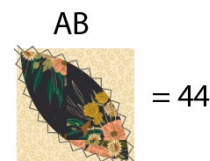


DIAGRAM 2

- Repeat the same assembling process by taking thirty six (36) 6½" squares from fabric **D**, forty (40) petal templates from frabric **C**, twenty eight (28) petal templates from fabric **E**, twenty eight (28) 6½" squares from fabric **F**, twenty (20) petal templates from fabrics **G**, twenty (20) 6½" squares from fabric **H** twelve (12) petal template from fabric **I** twelve (12) 6½" squares from fabric **J**, and four (4) 6½" squares from fabric **K**.
- Follow the diagram below for each unit assembly.

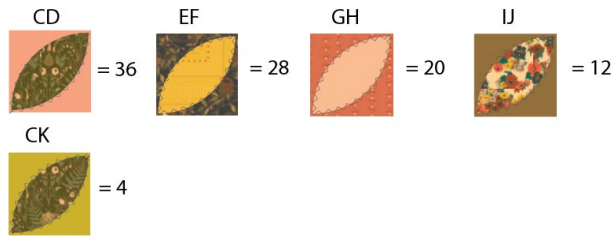


DIAGRAM 3

- Follow the diagram below for each row assembly.

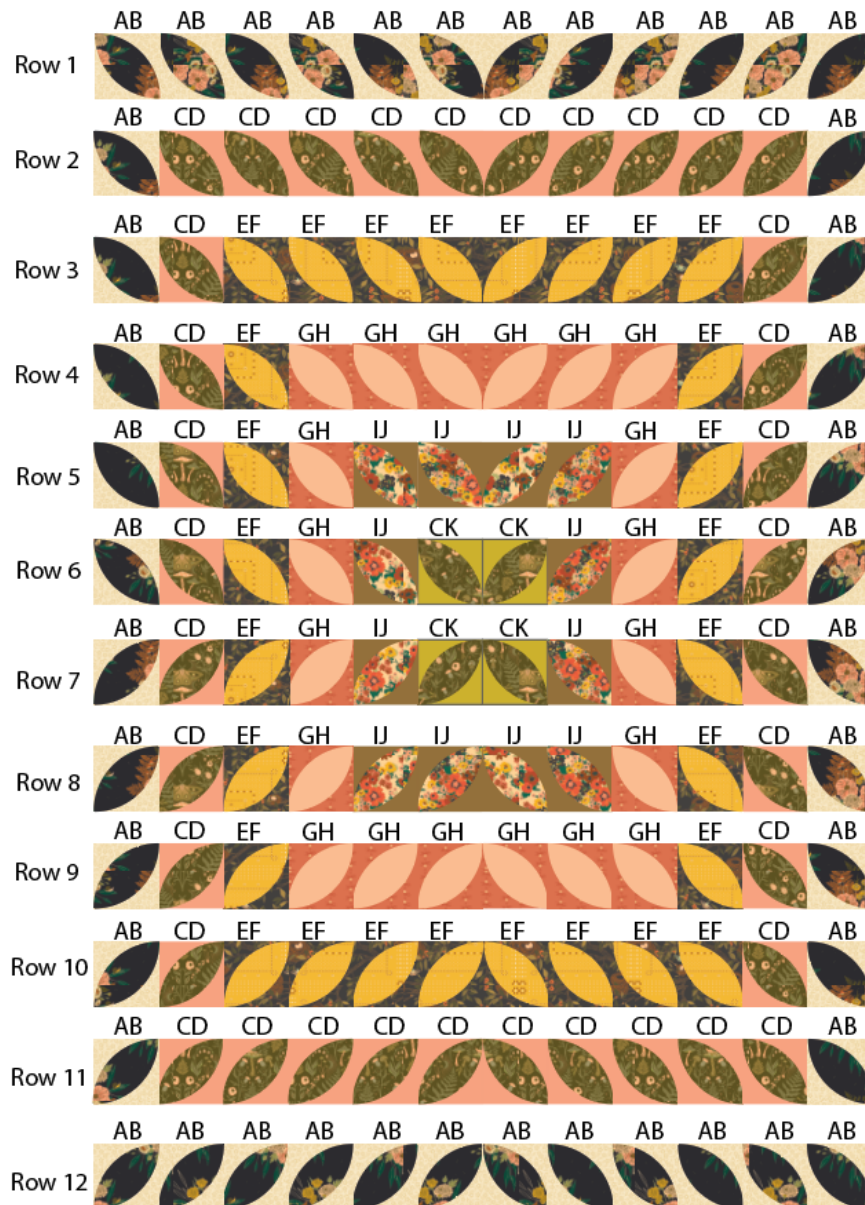


DIAGRAM 4

QUILT ASSEMBLY

Sew rights sides together.

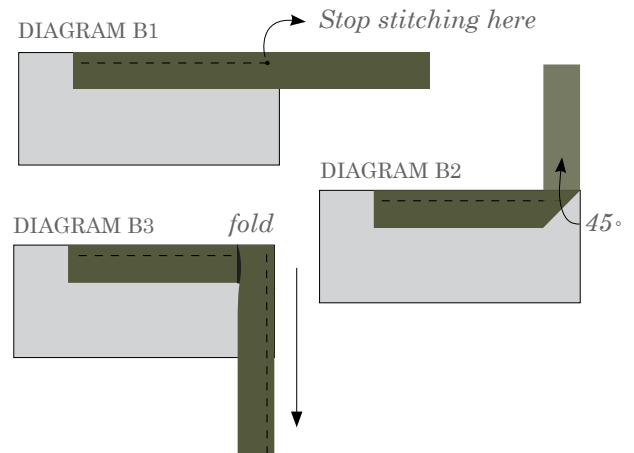
- Place BACKING FABRIC on a large surface wrong side up. Stretch it with masking tape against that surface.
- Place BATTING on top of backing fabric.
- Place TOP on top of the batting with right side facing up. Smooth away wrinkles using your hands.
- Pin all layers together and baste with basting thread, using long stitches. You can also use safety pins to join the layers.
- Machine or hand quilt starting at the center and working towards the corners. Remember that quilting motifs are a matter of personal preference. Have fun choosing yours!
- After you finished, trim excess of any fabric or batting, squaring the quilt to proceed to bind it.

- Stop stitching before you reach the last 5 or 6 inches. Cut the threads and remove the quilt from under the machine presser foot. Lay the loose ends of the binding flat along the quilt edge, folding the ends back on themselves where they meet. Press them together to form a crease. Using this crease as the stitching line, sew the two open ends of the binding with right sides together (you can help yourself marking with a pencil if the crease is difficult to see).
- Trim seam to $\frac{1}{4}$ " and press open. Complete the sewing. Turn binding to back of the quilt, turn raw edge inside and stitch by hand using blind stitch.

BINDING

Sew rights sides together.

- Cut enough strips $1\frac{1}{2}$ " wide by the width of the fabric **F** to make a final strip 298" long. Start sewing the binding strip in the middle of one of the sides of the quilt, placing the strip right side down and leaving an approximated 5" tail. Sew with $\frac{1}{4}$ " seam allowance (using straight stitch), aligning the strip's raw edge with the quilt top's raw edge.
- Stop stitching $\frac{1}{4}$ " before the edge of the quilt (DIAGRAM B 1). Clip the threads. Remove the quilt from under the machine presser foot. Fold the strip in a motion of 45° and upward, pressing with your fingers (DIAGRAM B2). Hold this fold with your finger, bring the strip down in line with the next edge, making a horizontal fold that aligns with the top edge of the quilt (DIAGRAM B3). Start sewing at $\frac{1}{4}$ " of the border, stitching all the layers. Do the same in the four corners of the quilt.



XXXXXXXXXXXXXXXXXXXXXXXXXXXXXXXXXXXX

*Congratulations
& enjoy*

XXXXXXXXXXXXXXXXXXXXXXXXXXXXXXXXXXXX



artgalleryfabrics.com

NOTE: While all possible care has been taken to ensure the accuracy of this pattern, We are not responsible for printing errors or the way in which individual work varies.

Please read instructions carefully before starting the construction of this quilt. If desired, wash and iron your fabrics before starting to cut.

© 2022 Courtesy of Art Gallery Quilts LLC. All Rights Reserved.

Printer Test



1" Square

Petal
Template

